

Spring/Summer Steelhead Flies



"Smuddler" Minnow

Hook: 2X to 4X long streamer hook sizes 2 to 12.
Tail: Red Hackle Fibers.
Body: Green braided mylar.
Underwing: Purple Squirrel Tail.
Wing: Black Marabou back to end of hook.
Gills: Red dubbing or hackle fluff, dubbed thinly.
Collar/Head: Black Dyed Deer Body Hair—Spun and Flared.



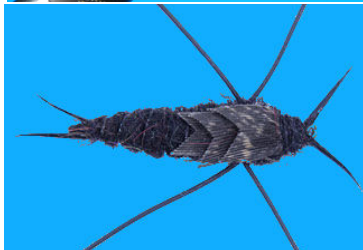
Green Butt Skunk

Hook: Standard or heavy wire Steelhead/Salmon— size 4/0—6.
Tail: Red Hackle Fibers
Butt: Fluorescent Green Chenille..
Rib: Flat or Oval Silver Tinsel
Body: Black Chenille.
Hackle: Black Saddle or Neck.
Wing: White Calf Tail/Kid Goat/Synthetic Hair to middle of tail.



Egg Sucking Leech

Hook: Standard or heavy wire Steelhead/Salmon— size 1/0—4.
Tail: Black Marabou with few fibers of Krystal Flash on each side.
Rib: Fine Copper Wire.
Body: Medium Chenille (Cactus, Crystal, etc.) double layered.
Hackle: Purple Saddle Hackle palmered over full length of the body.
Eyes: Solid Hourglass shape—painted or plain.
Egg: Chenille or dubbing wrapped around eyes in ball shape.



Steelhead Stone Nymph

Hook: Standard or heavy wire ring or down eye— size 2—6.
Weight: Bead or Wire Weight in Thorax area.
Tail: Pair of Strip Goose Biots.
Rib: V-Rib/Mono/LiquiLace or equivalent.
Abdomen: Dubbing tapering thicker—to mid Shank.
Wing Cases: 3 Turkey Tail Quill Strips—V Shape Coated with Flexament or equivalent.
Thorax: Dubbing—Thicker than Abdomen.
Legs: Optional—Rubber Hackle.
Head: Dubbing.
Antennae: Pair of Strip Goose Biots.



Krystal Bullet

Hook: Standard wire salmon wet fly size 2/0—6.
Tail: Hackle fibers or Krystal Flash. To Compliment or contrast collar color..
Body: Rear half—braided mylar. Front half—chenille or Dubbing—thick..
Collar/ Head: Krystal Flash spun and folded back "bullet head" style.
Length often extending back to rear of hook.



MOAL (Mother Of All Leeches)

Rear Hook: "Octopus" style short shank hook - size 2 to 6.
Body Core: High strength fine-diameter braided line attached to Front Body Shank and looped to extend to rear hook—twisted.
Adhesive: "Tear Mender" (a strong flexible adhesive used on the core.)
Body Wrap: Cross Cut Rabbit Strips.
Front Shank: Conventional hook with bend cut off after completion.
Eyes: Bead Chain/Lead Eyes or Cone Head on Front Shank.



"The Friendly Place for Fly Fishermen to Meet"

River City Fly Shop

11429 SW Scholls Ferry Rd
Beaverton, OR 97008

503-579-5176

<http://www.rivercityflyshop.com>